

The solution for smart agriculture

Basic version: simple and efficient

GPRS unit equipped with rain gauge and soil moisture sensors (up to four).
220 VAC or photovoltaic power supply.



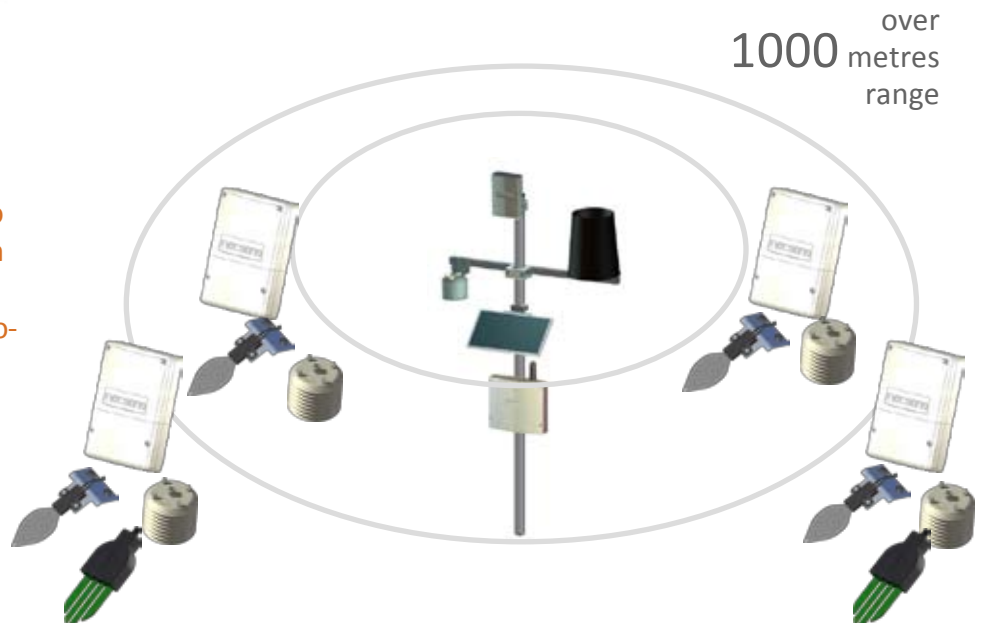
'Meteo' version: plenty of information

GPRS unit with climatic and soil moisture sensors.
Comprehensive and user friendly agronomic models.
220 VAC or photovoltaic power supply.



Wireless version: the access key to smart agriculture

Wireless units covering wide areas (up to 10's hectares or 100's acres) for irrigation plot monitoring.
Weather sensors on main unit, and micro-climatic and/or soil moisture sensors on wireless units



Save water and money and improve the quality of your products

The efficient management of your irrigation plant is a key to successful Farm business.

The evolution of modern irrigation plants, from the well-known drip irrigation up to the sub-irrigation systems, calls for new instruments to implement watering strategies based on actual measurement of ETP and hydric deficit.



Integrated Pest Management modules:



Grape:
Downy Mildew,
Powdery Mildew,
Grey Mould, Black
Rot *



Corn:
Corn Leaf Blight (*Exserohilum turcicum* and *Helminthosporium maydis*)

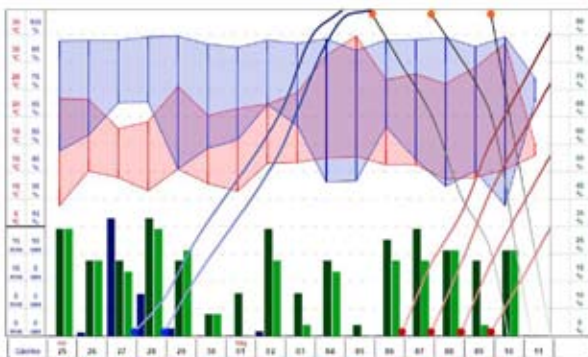


Tomato:
Powdery Mildew,
Alternaria, Grey Mould

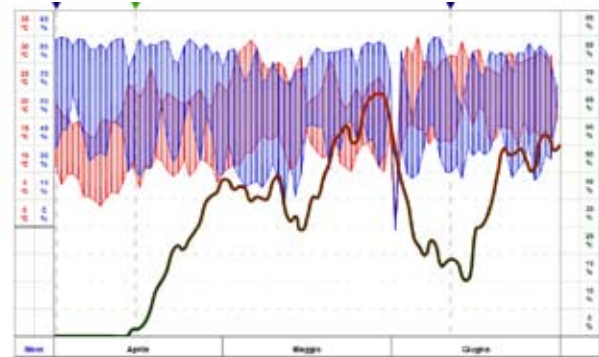


Apple and Pear*:
Scab (*Venturia inaequalis*),
Neonectria, Fire Blight (*Erwinia*),
Sooty Blotch, Codling
Moth, Apple Sawfly

* Requires external service subscription



Infection phases and sporulation evidence



Integrated infection risk analysis

netsens

